

Spfx Watches - Instruction Manual



This manual is divided into two main sections:

Sections A **Watch Operations**

Sections B **Download Operations**

Please also refer to the Frequently Asked Questions support page at www.spfxsports.com/FAQ or contact us directly at www.info@spfxsports.com

The software that goes with the watch runs on Microsoft Windows operating systems only.





Contents

Sections A - Watch Operations

| | |
|---|----|
| Watch Operations | 4 |
| Watch Layout, Analogue Time Setting, Operating LCD Backlight..... | 4 |
| Functions and Modes..... | 4 |
| PC Connector | 5 |
| Features | 6 |
| LCD Time Setting | 8 |
| Alarm Mode Setting..... | 9 |
| Team Schedule Mode | 10 |
| Calendar Mode..... | 11 |
| Recording Score Mode | 12 |
| Downloading Mode..... | 13 |
| World Time Zones | 14 |
| Stop Watch Mode..... | 15 |



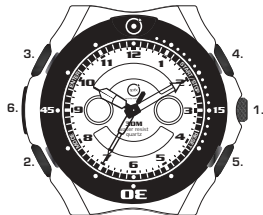
Sections B - Download Operations

| | |
|------------------------------------|-----------|
| Downloading Software..... | 16 |
| Update Key Pass Word..... | 18 |
| Connecting the watch to PC..... | 20 |
| Choosing your teams..... | 22 |
| Downloading fixture schedules..... | 22 |

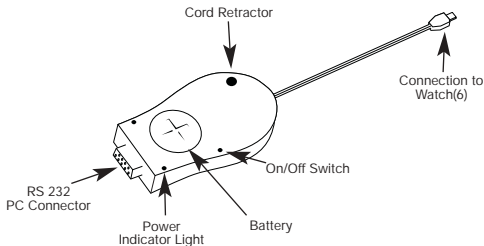
Section A - Watch Operations

There are 5(Five) buttons on the watch

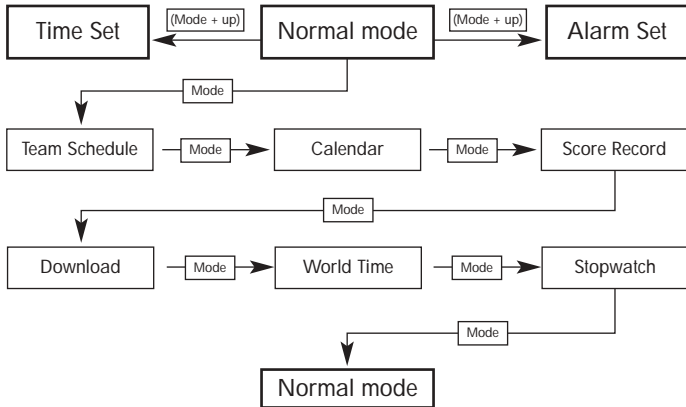
1. Crown - Pull out gently to operate Analogue time hands set and depress gently to operate LCD backlight.
2. Mode - Changes the mode of operation of the watch
3. Enter - Enters and confirms data saved
4. Start/Stop Up - Scroll functions
5. Down/Reset - Scroll functions
6. PC connector



The watch is pre set to "normal" mode, the following flow diagram shows how you can use the various buttons to change mode and to set the time and the alarm. For example, from normal mode press button (4) Start/Stop and hold to get to "Time Set", where you can set the current time and reset.



Features



Normal Mode

The watch LCD will display the following in Normal Mode:

Normal Mode (non-match day)



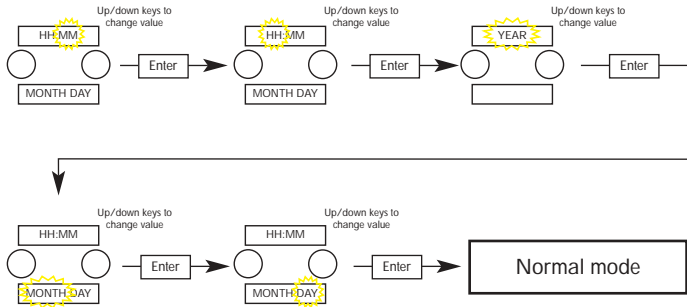
Normal Mode (match day)



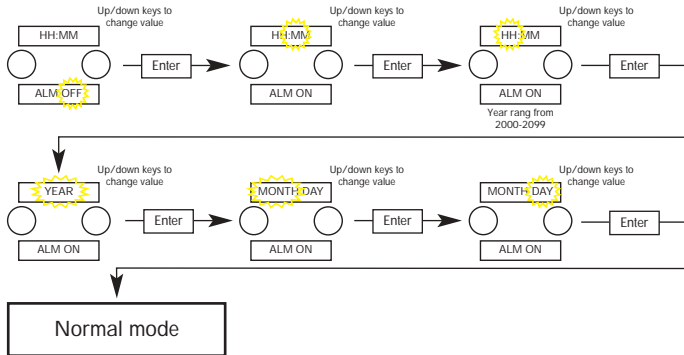
The Team name is the name of the team that you selected in the first window using the spfxsync.exe program.

Home team and Away team will be automatically displayed from 0100 GMT on the day of the match.

Time Set Mode for the LCD: press button (4) until 'Set Time' is displayed

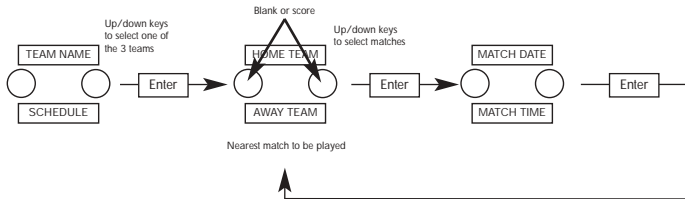


Alarm Set Mode: press button (5) until 'ALM ON' is displayed



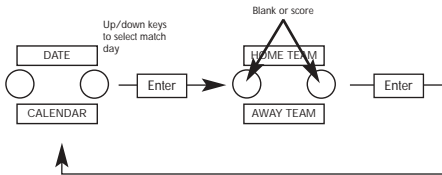
Use this mode to remind you of important matches to be played in the future.

Team Schedule Mode



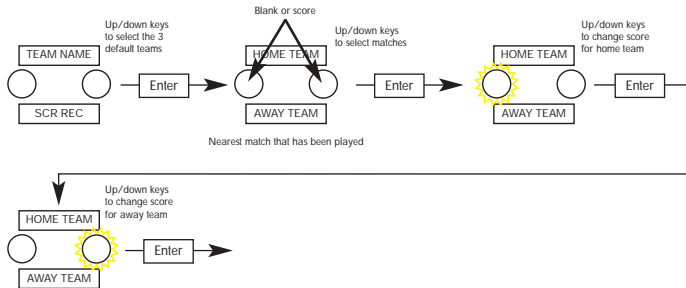
When you get into Team Schedule mode the team name displayed is the name of the team that you selected in the first window using the spfxsync.exe program. Use the Up/Down keys to change the team to one of the other 2 teams that you selected.

Calendar Mode



Use this mode to find out who your team is playing on a certain date.

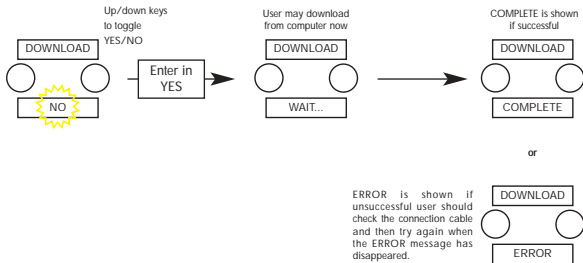
Score Record



Use this mode to enter score manually.

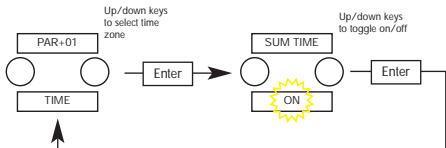
*nb: On downloading from the internet the scores will be updated automatically.
Remember to re-set dual LCD time and date.

Download Mode (see also Section B)



Use this mode when you are ready to download team data using the spfxsync.exe program described in Section B.

World Time Mode

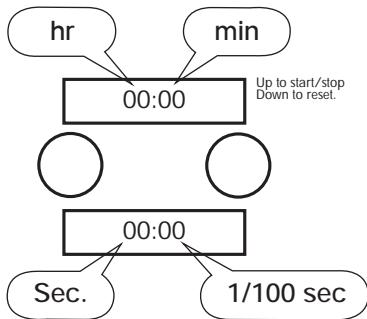


World time cities:

| | | | | | |
|---------|-----------|---------|----------------|---------|-------------|
| LON +00 | London | HKG +08 | Hong Kong | DEN -07 | Denver |
| PAR +01 | Pairs | TKY +09 | Tokyo | LOS -08 | Los Angeles |
| ATN +02 | Athens | SYD +10 | Sydney | ALK -09 | Alaska |
| Mos +03 | Moscow | AUK +11 | Auckland | HNL -10 | Honolulu |
| BGD +04 | Baghdad | RIO -03 | Rio de Janeiro | | |
| NDH +05 | New Delhi | STG -04 | Santiago | | |
| DHK +06 | Dhakar | NYK -05 | New York | | |
| BKK +07 | Bangkok | CHI -06 | Chicago | | |

*nb: When the dual LCD time is set and the World Time zone is for example set on London, that is then the default time zone.

Stopwatch





Section B - Download Operations

When you first get the watch you will need to download the spfxsync.exe program from www.spfxwsports.com

Once you have this program you can set the watch to Download Mode as described previously, select your teams and the team data will be automatically sent to the watch over the internet.

Downloading the software

Get on the internet and use any browser to get to www.spfxsports.com

Click on "Get Software" button.

There will be some message pages and then you should be at the page marked: "SPfx Sync®Download Page"



Click on Download

The Software will be installed automatically on to your desktop or to the location that you specify depending on your operating system.

After successful installation you will see an icon like this on your desktop or in the location that you specified:





Downloading the team fixture list files

First you will need to get the current "Update Key:" by clicking the Get Update button at www.spfxsports.com

There will be some message pages and then you should be at the page marked: "SPfx Sync@Update Page"

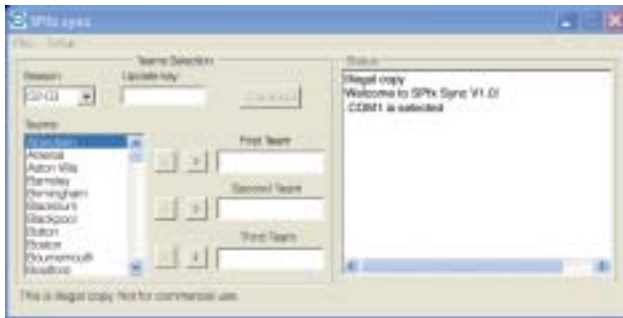
Make note of the "Update Page" for example SPfx 123

(Note that the "Update key:" changes frequently so you will have to get a new update key each time you want to get fixture list updates. If Spfx have got your email address we will inform you by email each time there is an update).

On your computer double click on the Spfxsync.exe icon (see 1.)



You should see a menu like this:



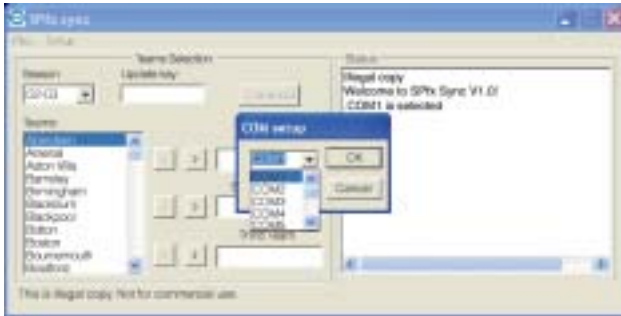


Firstly, remove rubber plug from the watch PC connector port (6) and place connector into the socket and the RS 232 into your PC.

Press button (2) until 'Download' is displayed on the watch. Press button (4) until 'YES' is displayed then press button (3) for 'WAIT' to be displayed.

You should make sure that you have connected the watch to your selected COM port and setup the watch in "Download Mode" as above or (see the watch manual delivered with the watch or go to www.spfxsports.com/watchmanual) Under setup, select the COM port that you are using.

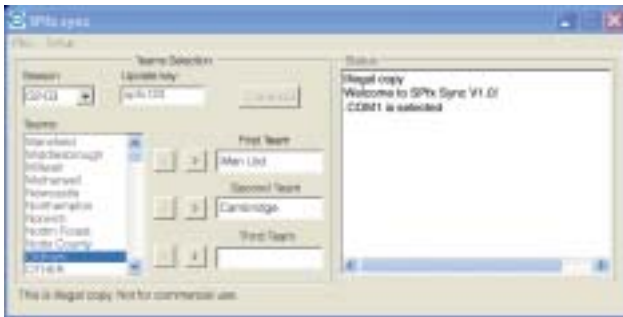




Note the if you are using a USB to RS232 converter you will need to install the s/w for the converter to set it up on a particular COM port (typically).

Next select season and then key in the update password.

Next select the three team files that you want to load into the watch. You do this by selecting the team that you want and then clicking on the > symbol. The first team that you select will be your default team. The screen should look something like this while you are doing this:





When the download is successful the watch will display 'complete'.
Switch off the connector and un-plug the RS 232 from the PC.

*nb Always check that the 'red' indicator light on the connector is on before downloading, and switched off after use.

Note that after you have successfully download new date you have to reset the LCD dual time and data.